

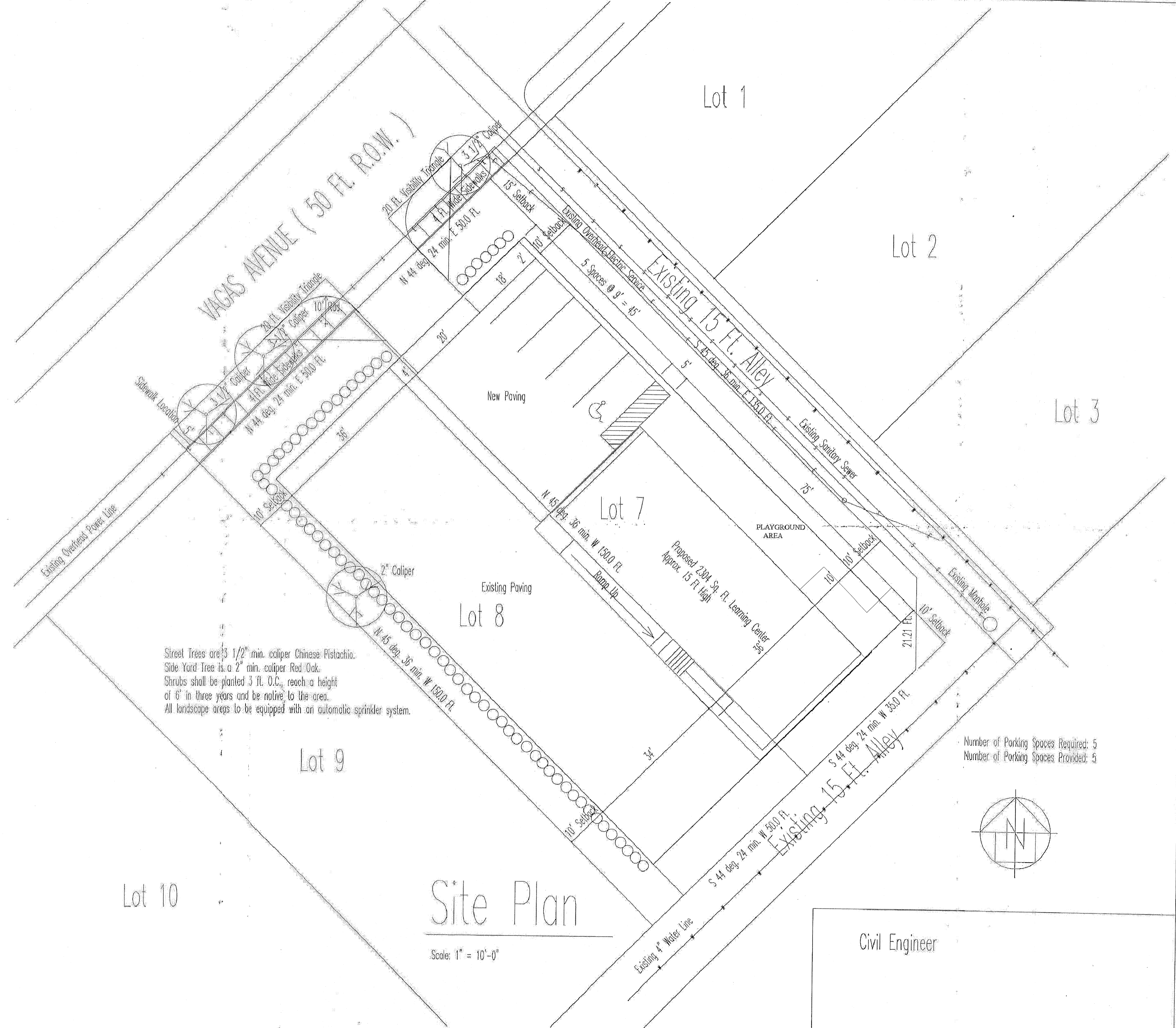
REVISIONS	BY
Moved Street Trees to between sidewalk & curb, moved 1.500 feet to street, moved walk to 10' from, moved dumpster and added 6" wood fence section, per City of Dallas, Revised, 2-18-98.	JAC
Changed sidewalk location from 10' to 5' from the book of the curb. Moved the Street Trees as a result and changed them from 3" to 3 1/2" caliper per City of Dallas, 3-2-98.	JAC

Mi Escuela Preschool
 2432 Vagos Ave., Dallas, TX
 (214) 526-0220 Bus. (214) 526-0243 Fax.

Emergy
 Design Modular
 1706 Creekway Dr., Lewisville, Texas 75067
 (972) 420-0902

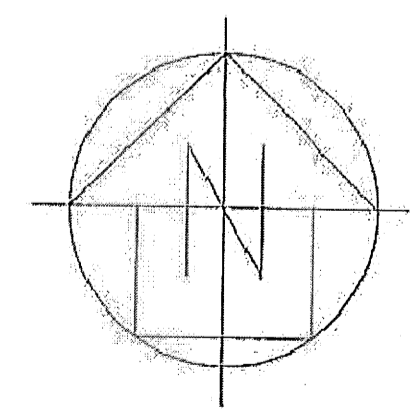
DRAWN BY
 Jack Christley
 CHECKED BY
 DATE
 February 2, 1998
 SCALE
 1" = 10'-0"
 JOB NO.

SHEET
 OF SHEETS



Street Trees are 3 1/2" min. caliper Chinese Pistachio.
 Side Yard Tree is a 2" min. caliper Red Oak.
 Shrubs shall be planted 3 ft. O.C., reach a height of 6" in three years and be native to the area.
 All landscape areas to be equipped with an automatic sprinkler system.

Number of Parking Spaces Required: 5
 Number of Parking Spaces Provided: 5



Site Plan

Scale: 1" = 10'-0"

Civil Engineer